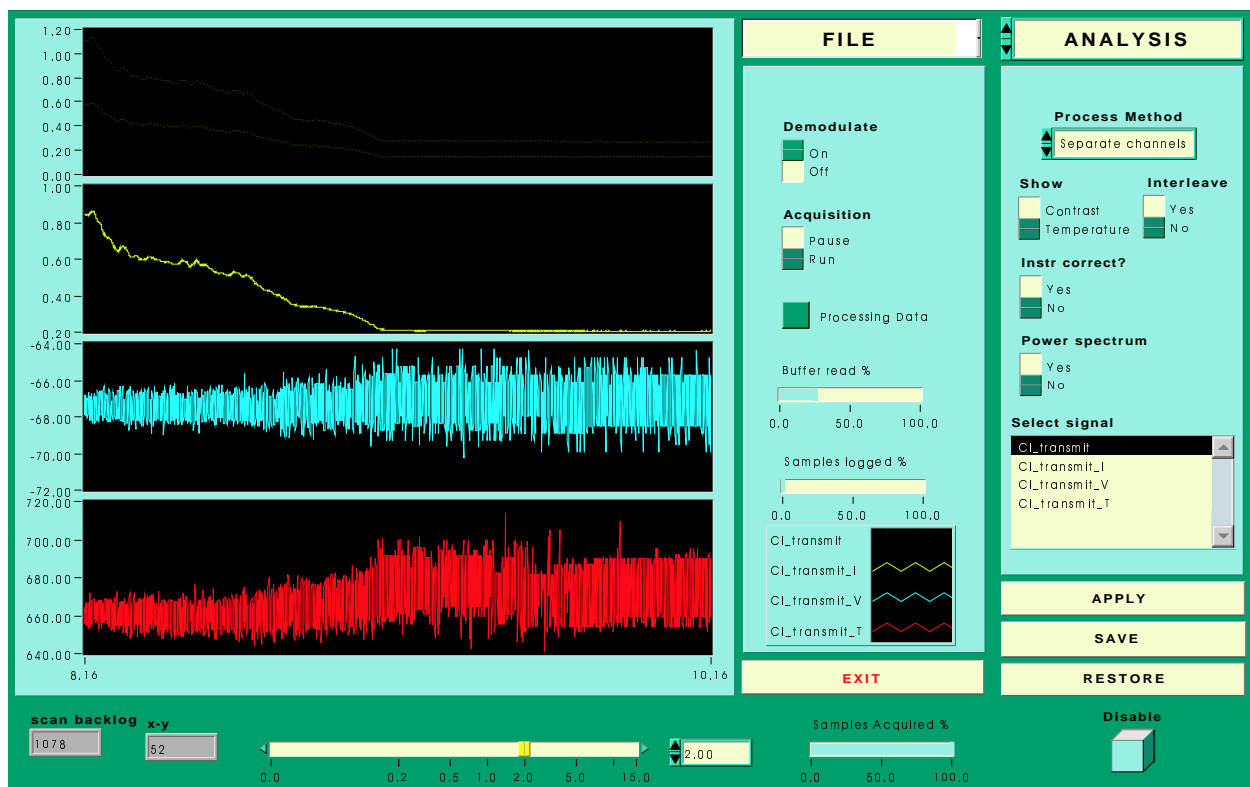


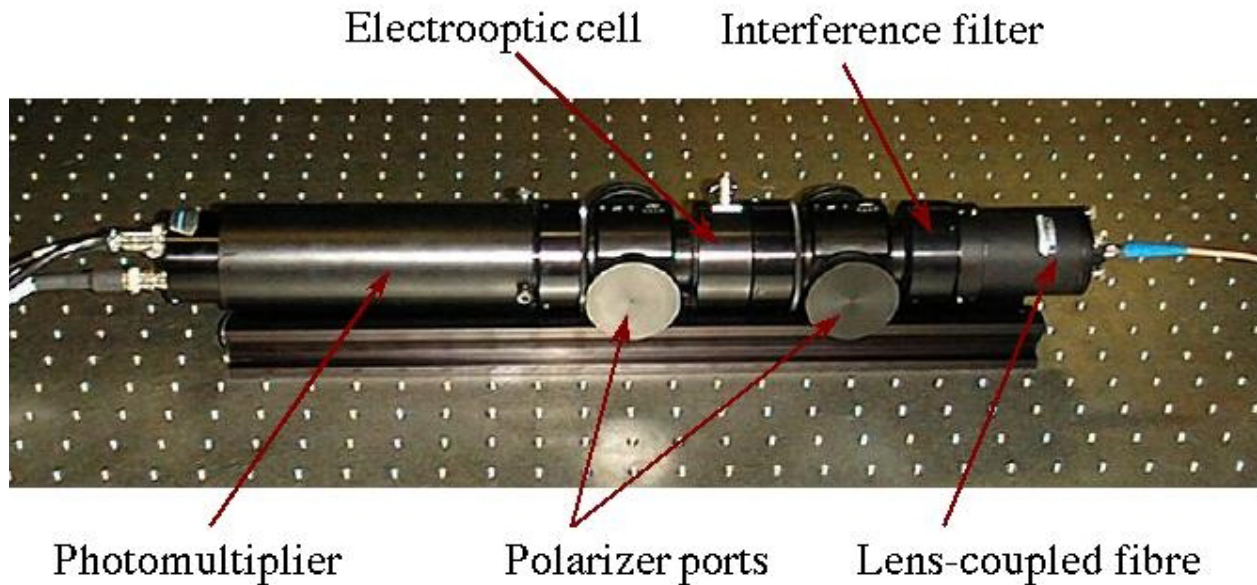
# SOFTWARE DRIVER

- A LabVIEW virtual instrument interfaced to a National Instruments PCI-MIO-16E-4 PC DAQ card is used to control the MOSS and process data.
- The DAC outputs control the EO modulation while the light waveform is synchronously sampled using on-board ADCs.
- The signals are demodulated by the computer for real-time display.

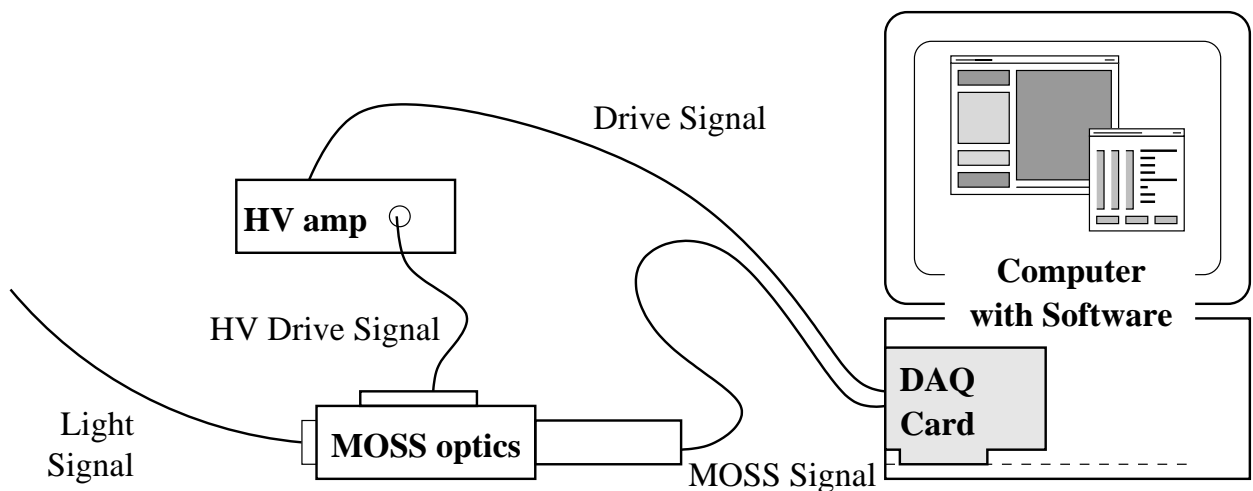


Screen shot of LabVIEW front panel. Signals from top: Synchronously sampled interferogram, inferred light intensity, phase shift (calibration sawtooth) and fringe contrast.

# COMPACT AND ROBUST HARDWARE



Photograph of the fibre-coupled single channel MOSS spectrometer. Polarizer reject ports can be used to cascade instruments or add additional.



MOSS configuration showing HV driver (audio amplifier and step-up transformer) and PC controller/acquisition system