

Erratum

Stephen T. Hyde, "Contemporary Geometry for the Built Design?", *Architectural Theory Review*, 15, 2 (August 2010): 110–124.

The Publisher regrets that on page 112 an error occurred. Figure 1 should have appeared as shown below. The Publisher apologises for any inconvenience caused.

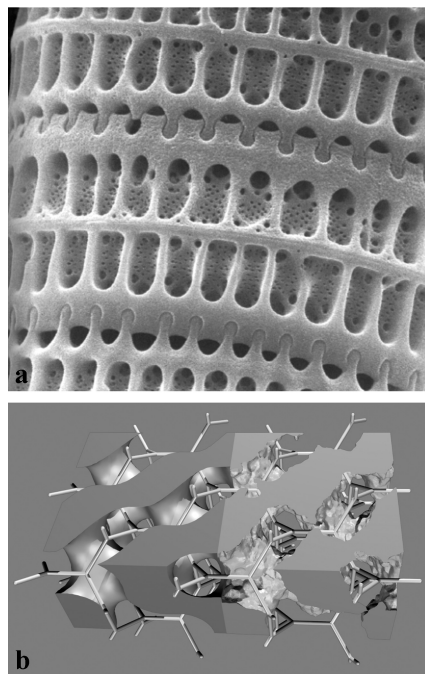


Figure 1. Natural form in living systems. A diatom skeleton, reproduced with kind permission of Hallegraeff (a); Source: Gustaaf Hallegraeff, *Plankton. A Critical Creation*, Sandy Bay, Tas., University of Tasmania, 2006, p. 49. Reconstruction from electron microscopic tomography of the chitin wing scale structure in the *Callophrys rubi* (b). The net within the voids of the structure indicate edges of the ideal net that describes the complex 3D arrangement of channels in this sponge-like structure. The (leftmost) smoothed structure represents a mathematical idealisation of the structural data (rougher, rightmost): an ideal mathematical form known as a triply periodic minimal surface.